

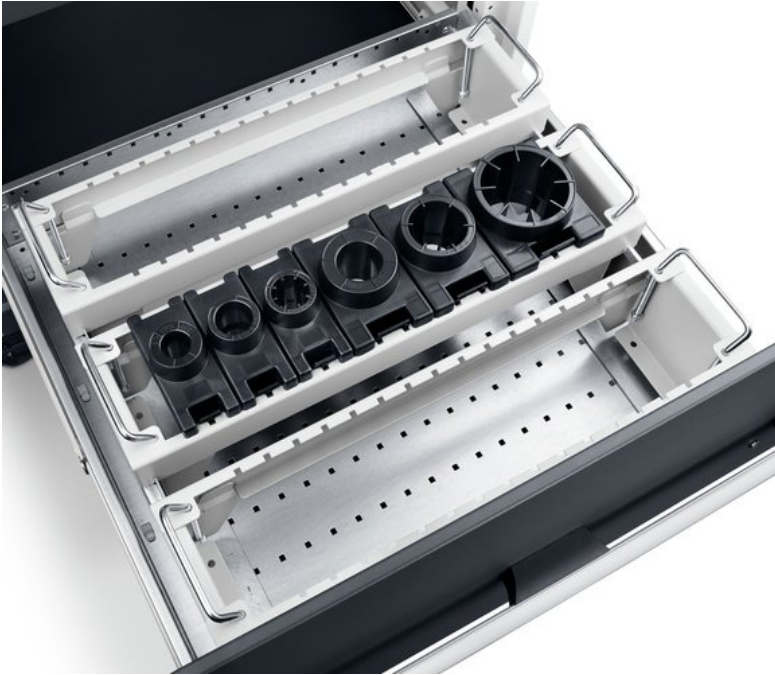
# 10401048.16 - CNC Compact Trolley

## Short Description

CNC compact trolley with 6 HSK A100 tool carriers. WxDxH: 650x710x1020mm. RAL 7035 light grey.

## Product Images





## Additional Information

---

description	10401048.16 CNC compact trolley with 6 HSK A100 tool carriers. Manufactured in the U.K. Heavy duty, fixed position trolley, includes 6 tool carriers with CNC inserts, 300kg U.D.L. total capacity. bott CNC storage is the professional way to store and protect high value tooling backed up by the bott Built To Last 10 year guarantee. WxDxH: 650x710x1020mm. Finished in epoxy powder coat paint, colour: RAL 7035 light grey.
Width	650
Depth	710
Height	1020
EAN code	5039350096581
Customs tariff number	94032080
Colour	Light grey
RAL colour	RAL7035
Product material	Sheet steel
Product surface	Powder coated