

CNC Storage



Efficient workspace





CNC - Machine tool storage



Maximum security

High capacity



Protection for high value tooling

Our CNC storage systems are designed to organise and protect expensive machine tools from damage, theft or loss. With clear storage and identification, tool handling can be kept to a minimum, workflows improved and machine set-up time reduced.

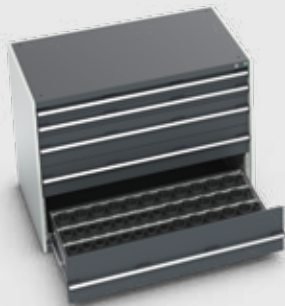
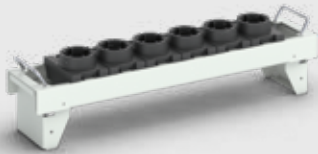
For most types of CNC machine tooling, our specialist range includes workbench mounted units, trolleys and high-capacity cupboards and cabinets.

Choose bott CNC systems and maximise security for your valuable business assets.

- Integrates with cubio and perfo systems
- Static and mobile options
- Fits most types of CNC machine tooling
- 10-year extended guarantee

CNC - Storage systems





Maximum Security

Tough, clip-in holding inserts are the core of the CNC storage system. Simple to fit, the inserts safely and securely hold all major tooling shank sizes.

Adaptable Tool Carriers

Sturdy, versatile and easily adapted carrier for the holding inserts. Use freestanding or with accessories.

Carrier Bench Stands

Securely holds up to three tool carriers on any bench worktop.

Carrier Trolleys

Flexible trolley options for tool carriers, providing high-capacity storage and ease of mobility.

Cabinets & Cupboards

Utilising the cubio range and accessories, there are many options for storing CNC tooling and tool carriers within the heavy-duty cupboards and drawer cabinets.

Useful Tool Blocks

Simple, steel tool blocks can be used freestanding or in conjunction with louvre panel racks and trolleys.

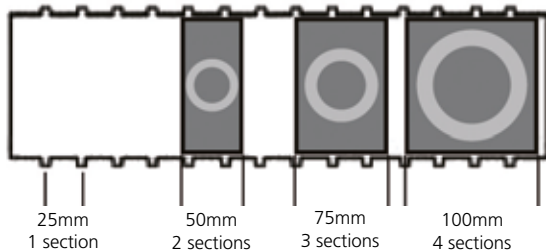
CNC | Inserts

Tool Holding Inserts

The core of the system are the easy fit tool holding inserts. 50, 75 or 100mm wide depending on model, they simply clip into the metal carrier or frame.

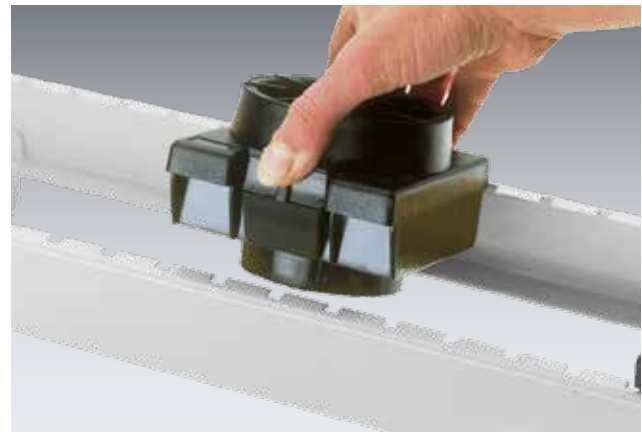
To calculate the insert capacity compare the tool type sections with the available sections per row in the metal carrier or holder.

A blank holder is available for other tool sizes. The solid plug is removed for machining to the required bore dimensions.



Inserts come in 3 section widths depending on bore type. The total capacity of a holder is relative to these section widths.

All inserts have a taper bore except VDI models. Top diameter shown. The insert sits 32mm above the metal carrier or holder.



Tool Type	Diameter (mm)	Sections	Width (mm)	Order Ref.
ISO30 / BT30 / SK30 / Morse 3	28	2	50	15002041
HSK - A40 / C40 / E40 / F40 / B50	30	2	50	15002042
HSK - A 32 / C32 / E32 / F32 / B40	24	2	50	15002043
Capto C3	23	2	50	15002093
Capto C4	29	2	50	15002094
VDI 30	30	3	75	15002044
VDI 40	40	3	75	15002045
ISO 35 / BT 35 / SK35 / Morse 4	35	3	75	15002046
ISO 40 / BT40 / SK40	41	3	75	15002047
ISO 45 / BT45 / SK45 / Morse 5	49	3	75	15002048
HSK - A50 / C50 / E50 / F50 / B63 / F63	38	3	75	15002049
HSK - A63 / C63 / E63 / B80	48	3	75	15002050
Capto C5	37	3	75	15002095
Capto C6	46	3	75	15002096
VDI 50	50	4	100	15002051
VDI 60	60	4	100	15002052
ISO 50 / BT 50 / SK50	67	4	100	15002053
HSK - A80 / C80 / E80 / F80 / B100	60	4	100	15002054
HSK - A100 / C100 / E100 / F100 / B125	75	4	100	15002055

CNC | Tool Carrier & Bench Stand

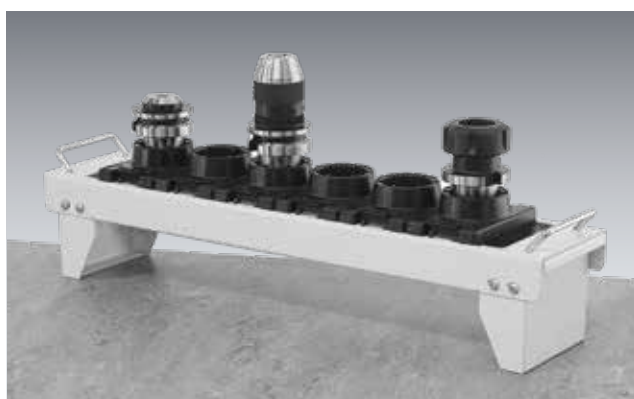
Tool Carriers

For use freestanding or in conjunction with trolleys, cupboards, benches and cabinets. Grab handles at each end allow for easy transportation.

Supplied with tool storage inserts for the most popular styles or empty for custom configurations.

RAL 7035 light grey powder coat finish as standard RAL 7016 anthracite grey is also available

Dimensions (mm) - 590 wide x 125 deep x 110 high



Kitted Tool Carriers		
Capacity	Tool Type	Order Ref.
10	ISO30 / BT30 / MT3	15001012.16
6	ISO35	15001013.16
6	ISO40 / BT 40	15001014.16
5	ISO50 / BT50	15001016.16
6	VDI30	15001017.16
6	VDI40	15001018.16
5	VDI50	15001019.16
5	VDI60	15001020.16
10	HSK A32/C32/E32 /F32/B40	15001021.16
10	HSK A40/C40/E40/F40/ B50	15001022.16
6	HSK A50 B63	15001023.16
6	HSK - A63 / B80	15001024.16
5	HSK A80/C80/E80/F80/B100	15001025.16
5	HSK - A100 / B125	15001026.16
10	Capto C3	15001030.16
10	Capto C4	15001031.16
6	Capto C5	15001032.16
6	Capto C6	15001033.16

Empty Tool Carrier		
Rows	Sections	Order Ref.
1	20	15001007.16

Tool Carrier - Bench Stand

- Allows tool carriers to be stored on any worktop
- Will hold 3 tool carriers (not included)
- 600mm wide x 450mm deep x 375mm high
- RAL 7035 light grey powder coat finish as standard RAL 7016 anthracite grey is also available



Item	Order Ref.
Bench Stand for 3x Tool Carriers	15001003.16

Standard: .16 RAL 7035 – light grey

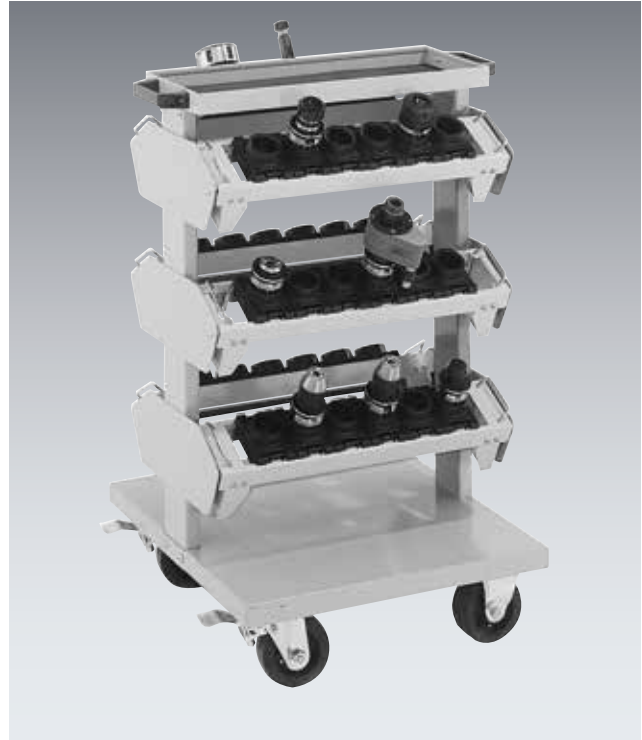
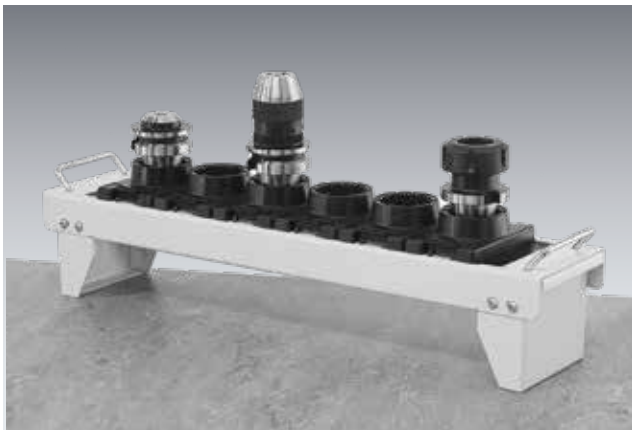
Optional: (For use with .77 models) .19 RAL 7016 – anthracite grey

- cupboards
- mobile
- cupboards
- benches
- accessories
- perfo
- CNC
- cupboards
- mobile
- cupboards
- benches
- accessories
- facilities
- cases
- seating

CNC | Tool Carrier Trolleys

Compact Trolley

- Fixed position trolley
- For tool carriers which fit directly into the trolley
- 650mm wide x 710mm deep x 1020mm high
- Supplied empty, add the required carriers
- 300kg total capacity
- RAL 7035 light grey only



Item	Tool Carriers	Order Ref.
Compact Trolley	Empty	10401030.16
Compact Trolley	6x ISO40 (36 Location total)	10401035.16
Compact Trolley	6x ISO50 (30 Location total)	10401036.16

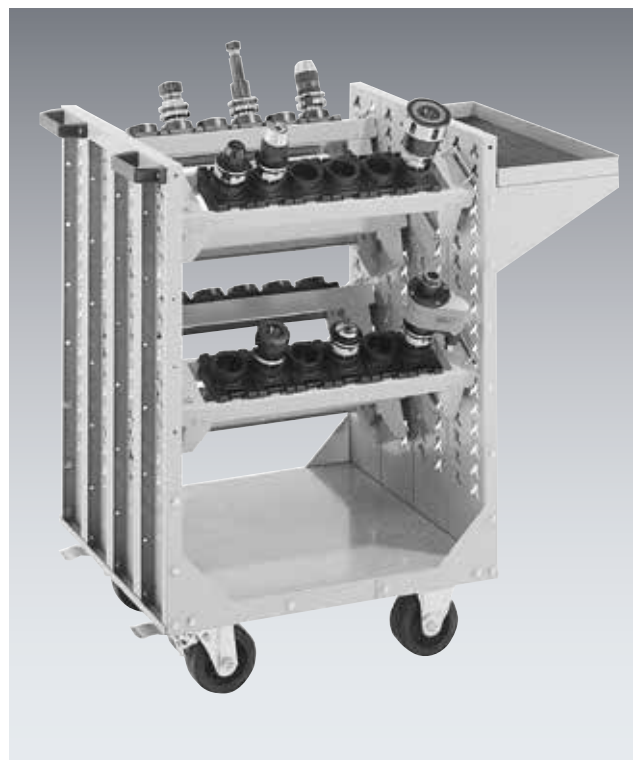
Item	Tool Carriers	Order Ref.
Compact Trolley	6x HSK A63 (36 Location total)	10401047.16
Compact Trolley	6x HSK A100 (30 Location total)	10401048.16
Compact Trolley	6x Capto C6 (36 Location total)	10401054.16

High Capacity Trolley

- Adjustable position trolley for tool carriers
- Each carrier requires a pair of carrier brackets
- An optional end shelf is available
- 670mm wide x 600mm deep x 985mm high
- Supplied empty, add the required carriers
- 300kg total capacity
- RAL 7035 light grey only



HC Trolley - Carriers require a set of holding brackets. Carriers may be mounted in multiple positions



Item	Order Ref.
End Shelf	12102084.16
Carrier Bracket Set	15003011.16



Item	Tool Carriers	Order Ref.
HC Trolley	Empty	10401029.16
HC Trolley	6x ISO40 (36 Location total)	10401033.16
HC Trolley	6x ISO50 (30 Location total)	10401034.16



Item	Tool Carriers	Order Ref.
HC Trolley	6x HSK A63 (36 Location total)	10401043.16
HC Trolley	6x HSK A100 (30 Location total)	10401044.16
HC Trolley	6x Capto C6 (36 Location total)	10401055.16

CNC | Carrier Drawer Frames & Cabinets

Tool Carrier - Drawer Brackets

For high volume storage with ease of access and security CNC tooling may be stored in one of the bott cubio static or mobile cabinets.

The cabinets will accept either the tool carrier via drawer brackets (below) or direct into the tool frame (opposite).

Both systems will work with a wide selection of cabinet sizes, the ideal model will depend upon the length and quantity of tooling.

Please ask for a no obligation quote or on site consultation to discuss your requirements.



Tool Carrier - Drawer Brackets

Tool carriers may be mounted within the drawers using the accessory bracket set. Add carriers from page 211 as required, up to 3 carriers may be stored in each drawer.

The ideal cabinet is 800mm wide x 650mm deep but the system will work with the larger sizes.

Note: Tool carriers are not included



Item	Order Ref.
Carrier Brackets	43013031.51V

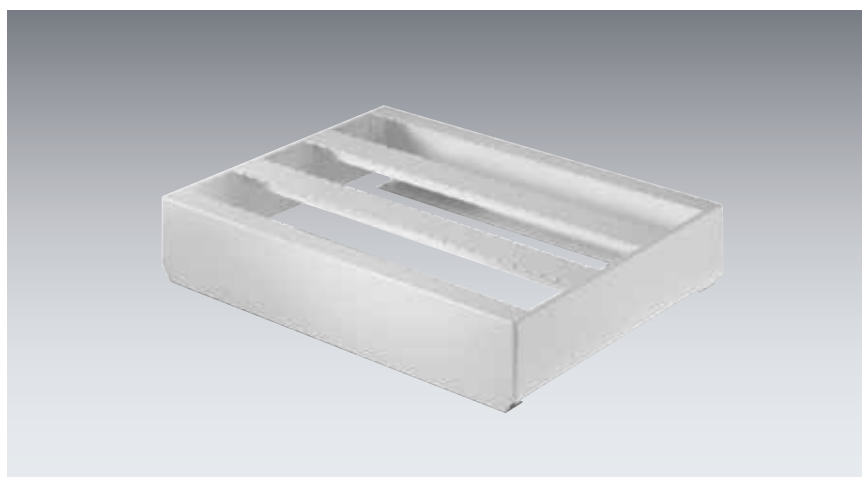
Drawer Frames & Inserts

CNC frame for use with cabinet or cupboard drawers. Add inserts from page 210 as required.

Any combination of CNC inserts may be used together in a single row up to the maximum number of sections per row.

Drawer frames are available in 80 and 125mm heights to suit the tooling shank length. Choose a cabinet drawer front height large enough to accommodate your tooling's overall length.

RAL 7035 light grey powder coat finish as standard RAL 7016 anthracite grey is also available.



Cabinet Width (mm)	Cabinet Depth (mm)	Rows	Sections Per Row	80mm high	125mm high
				Order Ref.	Order Ref.
525	525	2	15	43013001.16V	43013002.16V
525	650	3	15	43013011.16V	43013012.16V
650	650	3	20	43013013.16V	43013014.16V
650	750	4	20	43013023.16V	43013024.16V
800	525	2	26	43013005.16V	43013006.16V
800	650	3	26	43013015.16V	43013016.16V
800	750	4	26	43013025.16V	43013026.16V
1050	525	2	36	43013007.16V	43013008.16V
1050	650	3	36	43013017.16V	43013018.16V
1050	750	4	36	43013027.16V	43013028.16V
1300	650	3	46	43013019.16V	43013020.16V
1300	750	4	46	43013029.16V	43013030.16V

Standard:

.16
RAL 7035 – light grey

Optional: (For use with .77 models)

.19
RAL 7016 – anthracite grey

cupio
cabinets

cupio
mobile

cupio
cupboards

cupio
benches

cupio
accessories

perfo

CNC

verso
cabinets

verso
mobile

verso
cupboards

verso
benches

verso
accessories

facilities

cases

seating

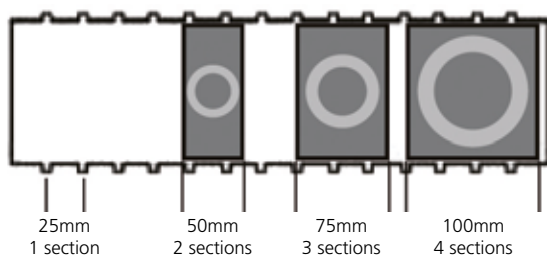
CNC | CNC Cupboards Storage

CNC Cupboards

- From the heavy duty cubio range
- 800mm or 1050mm wide x 525mm deep, choice of heights
- perfo or louvre door liner panels
- 75kg U.D.L. capacity drawers for drawer frames
- For carrier storage use the carrier holding shelf
- Sliding storage shelf accepts inserts

To ensure maximum stability all cubio cupboards should be bolted to the floor.

Insert Fitment



Any combination of CNC inserts may be used together in a single row up to the maximum number of sections per row.



Empty Housings

Cupboard Width	Cupboard Depth	Cupboard Height	perfo Doors	Louvre Doors	Window Doors	Roller Shutter Door
			Order Ref.	Order Ref.	Order Ref.	Order Ref.
800	525	800	40012049.19V	40012050.19V	/	/
800	525	1000	40012053.19V	40012054.19V	/	/
800	525	1200	40012055.19V	40012056.19V	/	/
800	525	1600	40012057.19V	40012058.19V	/	/
800	525	2000	40012059.19V	40012060.19V	/	/
1050	525	800	40013009.19V	40013010.19V	/	/
1050	525	1000	40013013.19V	40013014.19V	40013078.19V	/
1050	525	1200	40013015.19V	40013016.19V	40013021.19V	40201001.19V
1050	525	1600	40013017.19V	40013018.19V	40013022.19V	/
1050	525	2000	40013019.19V	40013020.19V	40013023.19V	40201002.19V

800mm Wide x 525mm Deep x 2000mm High

Supplied as a kitted CNC storage cupboard using a cubio heavy duty housing and dedicated CNC storage accessories.

- 2000mm high x 800mm wide x 525mm deep cupboard with perfo lined doors
- 175mm drawers with 75 Kg U.D.L capacity
- Sliding CNC shelves and frames with 75 Kg U.D.L capacity
- Includes tool carriers
- Tool holding inserts included for fitment into the drawer frames, sliding shelves or tool carriers
- Alternate door styles and CNC tool sizes available, please ask for details



Contents	Order Ref.
2 175mm drawers	40012130.19V
2 CNC drawer frame	
1 CNC sliding shelf frame	
1 CNC tool carrier sliding shelf	
3 Tool carriers	
74 ISO 40 / BT40 / SK40 tool holding inserts	

Contents	Order Ref.
2 175mm drawers	40012131.19V
2 CNC drawer frame	
1 CNC sliding shelf frame	
1 CNC tool carrier sliding shelf	
3 Tool carriers	
74 HSK A63/C63/E63/B80 tool holding inserts	

Housing:

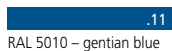


RAL 7035 – light grey

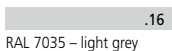
Top, bottom and fronts:



RAL 7016 – anthracite grey



RAL 5010 – gentian blue



RAL 7035 – light grey



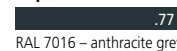
RAL 3004 – crimson red

Housing:



RAL 7016 – anthracite grey

Top, bottom and fronts:



RAL 7016 – anthracite grey

cubio cabinets

cubio mobile

cubio cupboards

cubio benches

cubio accessories

perfo

CNC

verso cabinets

verso mobile

verso cupboards

verso benches

verso accessories

facilities

cases

seating

CNC | CNC Cupboards Storage

Drawer Pan



125mm or 175mm high drawers with 75kg U.D.L. capacity on smooth action roller bearing slides. Adjustable on a 25mm vertical pitch.

Cupboard Size (mm)	125mm High	175mm High
	Order Ref.	Order Ref.
800 x 525	40522013.16V	40522015.16V
1050 x 525	40522017.16V	40522019.16V

Standard Shelf



Durable, scuff resistant galvanised steel shelves, 100kg U.D.L. capacity. Adjustable on 25mm pitch.

Cupboard Size (mm)	Order Ref.
800 x 525	42101014.51V
1050 x 525	42101018.51V

Drawer Frame



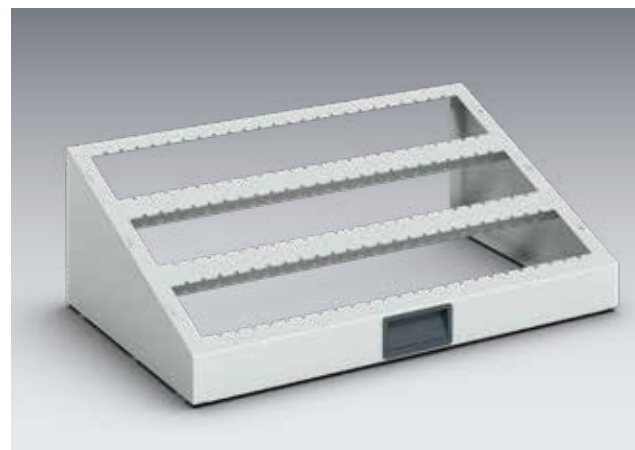
Supplied as an empty frame for use with the tool holding inserts detailed on page 210.

- Fits into a standard 1050 or 800mm wide x 525mm deep cubio cupboard drawer. (Drawer not included.)
- 2 Rows per drawer frame
- 26 sections per row (800mm wide models)
- 36 sections per row (1050mm wide models)
- RAL 7035 light grey powder coat finish as standard RAL 7016 anthracite grey is also available



Cabinet Width	80mm High Frame	125mm High Frame
	Order Ref.	Order Ref.
800mm	43013005.16V	43013006.16V
1050mm	43013007.16V	43013008.16V

Sliding Shelf Frame



Supplied as an empty frame for use with the tool holding inserts detailed on page 210.

- Roller bearing slides, 75kg U.D.L. load capacity
- Overall height is 220mm
- 3 Rows per sliding shelf frame
- 24 sections per row (800mm wide models)
- 33 sections per row (1050mm wide models)
- Supplied in RAL 7035 light grey or RAL 7016 anthracite grey

Cupboard Width	Cupboard Depth	Order Ref.
800mm	525mm	40523002.16V
1050mm	525mm	40523005.16V

Tool Carrier - Sliding Shelves



Supplied empty as a frame for use with the tool carriers, 3 tool carriers may be located in each shelf. For tool carriers see page 211.

- Roller bearing slides, 75kg U.D.L. load capacity
- Overall height is 220mm
- Supplied in RAL 7035 light grey or RAL 7016 anthracite grey

Cupboard Width	Cupboard Depth	Carrier Capacity	Order Ref.
800mm	525mm	3	40523001.16V

Standard:

.16
RAL 7035 – light grey

Optional: (For use with .77 models)

.19
RAL 7016 – anthracite grey

CNC | Tool Blocks & Panels

Tool Blocks

Steel tool blocks for use freestanding or in conjunction with louvre panels.

Blocks are 233mm wide x 158mm deep x 139mm high. The most popular styles are shown complete with tool holding inserts, for other types use the empty block and add the required inserts from page 210.

Tools Stored	Tool Type	Order Ref.
4	ISO30 / BT 30 / MT3	15002057.16
3	ISO40 / BT 40	15002059.16
2	ISO50 / BT50	15002061.16
3	VDI30	15002062.16
3	VDI40	15002063.16
2	VDI50	15002064.16
3	HSK A63 / B80	15002069.16
2	HSK A80 / B100	15002070.16



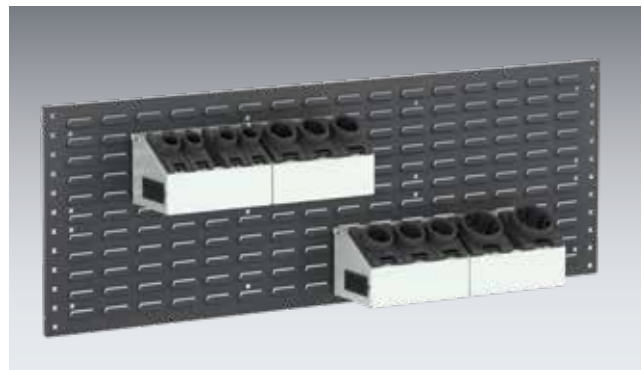
Empty Tool Block

Rows	Sections	Order Ref.
1	9	13013054.16

Tool Block - Louvre Panels

Louvre panels are available in 3 widths, all feature reinforcing strips and folding to increase rigidity. Hook on bins and holding accessories are also available, please see page 182.

Panel W x H (mm)	Maximum Tool Blocks Per Panel	Order Ref.
495 x 457	4	14025137.19
990 x 457	8	14025139.19
1486 x 457	12	14025140.19



Tool Block - Louvre Bench Panels

Using the standard horizontal panel the bench stand kit has rear brackets and end panels.

Suitable for fitment to all bott benches.

Overall height above the worktop is 457mm.

Bench Width (mm)	Order Ref.
1500	07002203.19V
2000	07002204.19V



CNC | Tool Block Panel Rack & Trolleys

Tool Block - Freestanding Louvre Panels

Freestanding rack utilising the horizontal louvre panels. Available in single and double sided formats, starter and add on styles.
 Up to 32 tool blocks may be used on each side. A base shelf for long tooling is available as an option.
 1015mm wide x 452 / 905mm deep x 1835mm high.



Optional base shelf kit.

Format	Style	Depth (mm)	Order Ref.
Single Sided	Starter	452	12102092.19
Double Sided	Starter	905	12102094.19
Single Sided	Add on	452	12102093.19
Double Sided	Add on	905	12102095.19
Base Shelf			12102096.16



Double sided starter rack shown with optional tool blocks and base shelf.

Tool Block - Louvre Panel Trolley

Double sided louvre panel trolley with a 3 piece top tray, push / pull handle and 125mm diameter wheels included as standard.
 Up to 12 blocks may be stored on each side.
 Reinforced lockable doors and a base shelf for long tooling are available as optional extras.
 1115mm wide x 600mm deep x 1150mm high.

Trolley shown complete with optional tool blocks.

Item	Order Ref.
Tool Block Trolley (empty)	10403013.19
Door Kit (for 1 Side)	12501016.19
Base Shelf	12102096.16

Optional door kit.



Frame:	Panels:
	.19
	.11
	.16
	.24

RAL 7035 – light grey RAL 7016 – anthracite grey RAL 5010 – gentian blue RAL 7035 – light grey RAL 3004 – crimson red

- cupboards
- mobile
- cupboards
- benches
- accessories
- perfo
- CNC
- cupboards
- mobile
- cupboards
- benches
- accessories
- facilities
- cases
- seating

bott

Our main Workplace Storage Equipment catalogue showing our full range is available to download from our website.



For more information please contact your local dealer:

To confirm current prices please contact your dealer; or bott on:
Tel: 01288 357788 Email: i-sales@bott.com Web: www.bottltd.co.uk