

# Workplace project service



From concept to reality



Advice & planning

Delivery & installation

# S T R E T N O C U

	Page
Global presence, local service	4 - 5
Built to last	6 - 7
Our commitments	8 - 9
Advice & planning	10 - 11
3D visuals	12 - 13
BIM compatibility	14 - 15
Dedicated fleet	16 - 17
Expert installations	18 - 19
Custom solutions	20 - 21
Customer service	22 - 23
Case studies	24 - 31



## Your project partner

At bott, we're focussed on creating efficient, organised workspaces, for customers who want to improve and evolve and get the best out of their working environments. Our experience shows that investments in modern fit-for-purpose equipment, results in greater efficiencies, increased productivity and long-term operational success.

We understand that every business is different and many workspaces require individual solutions, based on location, operation and workflow.

That's why our offer goes beyond just the simple supply of products - we regularly design, manufacture and install

customised systems. Whatever you're planning to fit out, from complex, large-scale new builds to functional site refurbishments, our standard ranges are only the start of what our project design team can achieve.

Combining our many years of industry insight, with knowledge of workplace ergonomics and product performance - we will work with you to create the perfect working environment.

**Choose bott. Your reliable project partner.**

Contact us:

Tel: 01288 357788 or Email: [projects@bottltd.co.uk](mailto:projects@bottltd.co.uk)



# Global presence, local service



The Bott Group





## A partner you can trust

With over 90 years of industry experience, the Bott Group are world-leading manufacturers and suppliers of efficient workspace solutions; with three manufacturing sites in Europe and a fully integrated global sales network.

In the UK, Bott Ltd. have been manufacturing high-quality workplace storage equipment for over 40 years.

Innovation is key to our success. We develop and create market led solutions, based on a real understanding of our customers' needs. We are agile and flexible and collaborate on a group level to develop new and relevant products.

As a trusted partner to many specialist brands from a wide range of industries, we are well prepared to assist you with your workplace storage requirements.

**Choose bott and benefit from a wealth of knowledge, skill and expertise.**

Built to last



10 Year extended guarantee





## Made in the UK

We are proud to be a British manufacturing success story. From our UK facility in Cornwall, we ensure that the technologies and processes we use, are focused on delivering the best value for our customers.

Through the application of LEAN manufacturing principles and investments into automated production; our state-of-the-art factory delivers consistent high-quality, from raw materials through to our finished products. Our flexible manufacturing capability and customer focused approach, enables us to offer both comprehensive ranges and bespoke requirements.

Our 'Built to Last' commitment, means that your workplace storage equipment will stand the test of time and match the exacting demands of your operations. Our UK manufactured products carry a 10-year extended guarantee and support is only a phone call away.

**Choose bott and you'll be investing in a professional, long-term solution.**



# Our commitments



Positive impact

Long-term solutions



## Sustainable & responsible

Choosing functional, sustainable products that stand the test of time, is now more important than ever. Therefore a long-term investment today, helps to prepare for the challenges of tomorrow.

Our high-performance products are both durable and modular, providing you with a future proof workspace that can be expanded or amended at any time.

As a company, we take a proactive approach to reducing our environmental impact and are committed to protecting our natural resources. We've invested heavily in green technologies across our UK sites, such as electric company vehicles, rainwater harvesting, energy efficiency, intelligent lighting

and solar power. Bott Ltd is registered to and meets the requirements of the internationally recognised Environmental Management Standard - ISO 14001:2015 by NQA.

Our UK manufacturing facility in Bude, Cornwall, is one of the largest employers in the region and we're proud to maintain a positive impact on the local community through a variety of support initiatives.

**Choose bott for durable, sustainable solutions.**



# Advice & planning



Let us visit you

Expert advice





## Consultation service

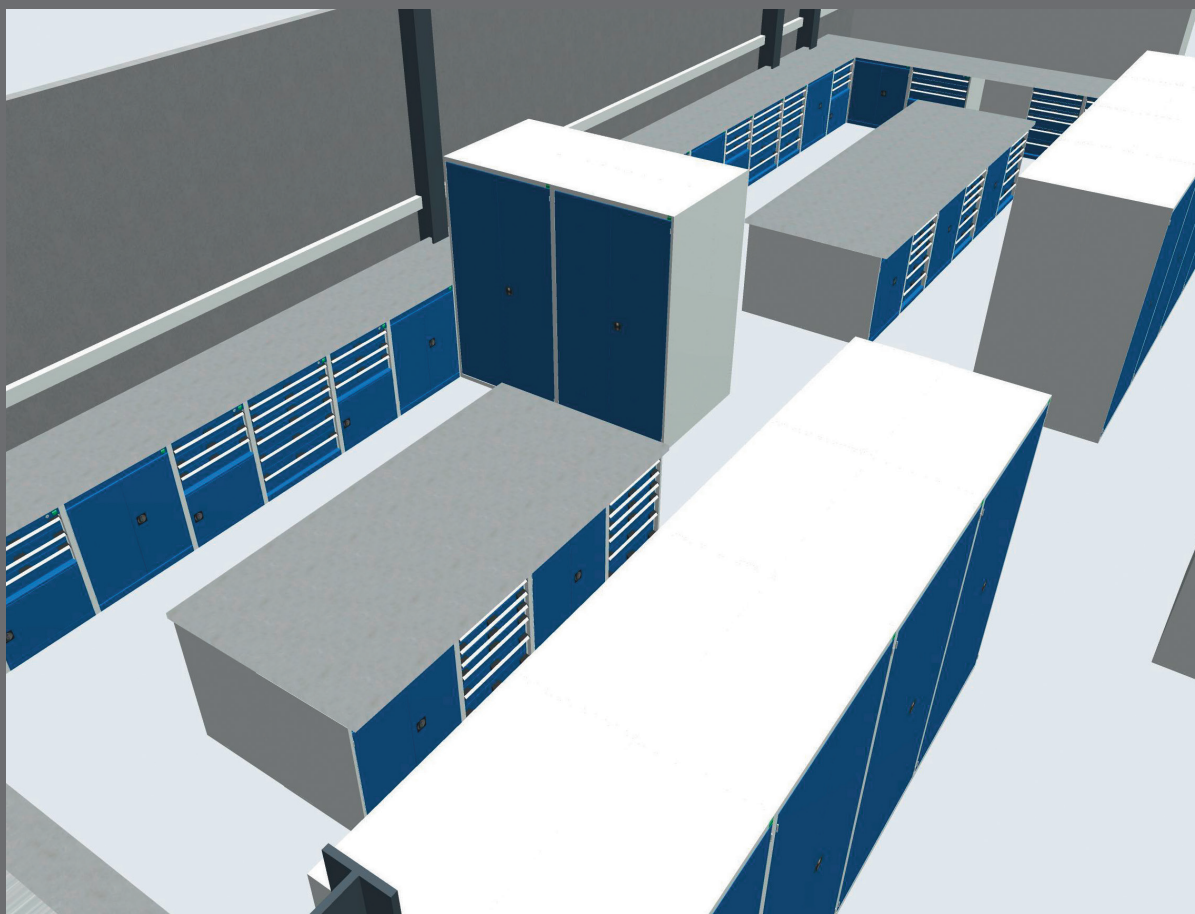
Planning a workspace might seem simple, but today's working environments have advanced beyond simply filling an empty space with equipment. Whether you're looking to kit out a new facility, or simply transforming an existing area, there are many things to consider besides budgets and timescales.

Our project management team are specialists in the field. They can visit you for a free consultation, onsite or virtually, to understand your needs in more detail. They'll look at the location, access and size of the working area and learn more about your operations, workflows and particular storage requirements.

By working closely with you at every stage, our team will advise on the most suitable products, materials and ergonomic factors, to create an efficient solution that's perfect for you.

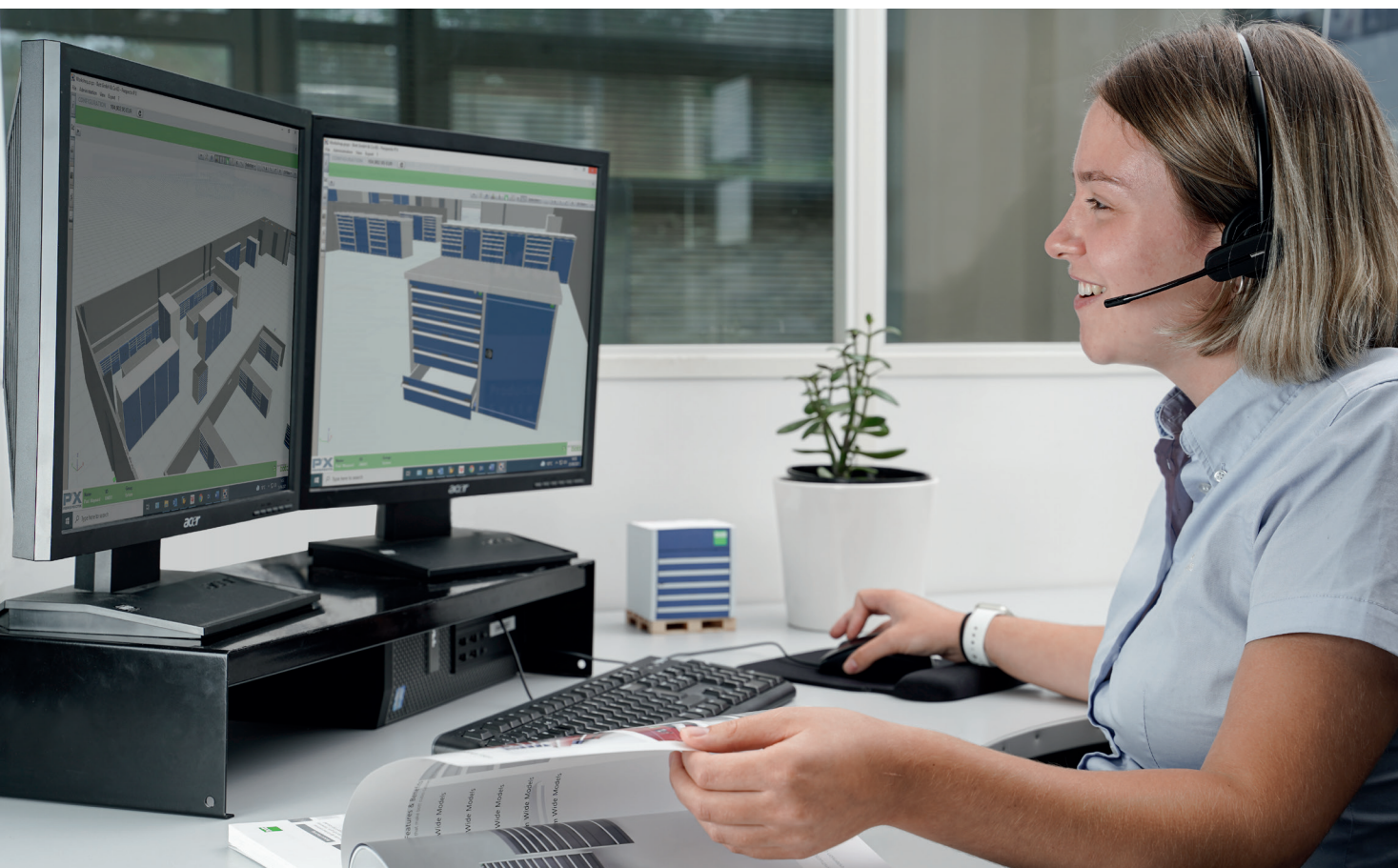
**Choose bott and receive a tailored, professional service.**

# 3D visuals



Your vision

Our plans



## From concept to reality

Whether for use alongside Architect's drawings at the start of a project, or for when introducing new workflows and processes into a business, detailed visual plans can help leverage your proposed investment.

When planning your workspace, our project team can produce 3D visuals of your equipment layout, enabling colleagues and stakeholders to easily envisage your ideas. If at any time you need the drawings amended - for product, colour or layout options - we can easily show an alternative solution.

Our team will focus on getting the best out of your budget as well as your working area and upon request, can provide you with a no obligation quote to support your visual proposal.

With a wide-ranging product offer and the flexibility that comes from having our own manufacturing plant, we can transform your ideas into reality.

**Choose bott and see your workspace come to life.**



# BIM compatibility

The screenshot displays the BIMstore website interface. At the top left is the 'bimstore' logo. To its right are navigation links: 'Join', 'Login', 'Browse', 'Collections', 'Manufacturers' (underlined), 'Forum', and 'Resources'. The main content area features the 'bott' logo and the heading 'Bott Ltd'. A descriptive paragraph follows, stating that Bott is a world-leading manufacturer of workshop equipment, including workbenches, drawer cabinets, and cupboards. Below this are three buttons: 'Follow', 'Message', and 'Request Object'. To the right, under 'Contact Details', are links for the website (www.bottltd.co.uk), email (i-sales@bottltd.co.uk), and phone number (01288 357788). A note mentions free manufacturer-approved BIM content. Below the main content is a navigation bar with a UK flag, a search bar, and dropdown menus for 'All Products', 'All Categories', and 'Sort By'. The product grid shows four items: 'Cubio Bench OH Kit 15-01', 'Cubio Mobile Cab 50-50 (Mpx)', 'Verso Economy Lectern With Backpanel', and 'Verso Computer Cupboard', each with a 3D model and 'By Bott Ltd' attribution.

**bimstore** Join Login

Browse Collections Manufacturers Forum Resources

**bott** **Bott Ltd**

Bott is a world-leading manufacturer and supplier of workshop equipment, in-vehicle equipment and workplace systems. A huge range of workbenches, drawer cabinets and cupboards are available from 2 modular systems enabling us to offer the perfect storage solution for any working environment. From design and manufacture to supply and installation, Bott has a strong reputation for high product quality, service excellence and value for money.

Follow  
Message  
Request Object

Free manufacturer approved BIM content to download for the Bott Ltd Workplace Storage systems.

**Contact Details**

[www.bottltd.co.uk](http://www.bottltd.co.uk)  
[i-sales@bottltd.co.uk](mailto:i-sales@bottltd.co.uk)  
01288 357788

UK  All Products All Categories Sort By

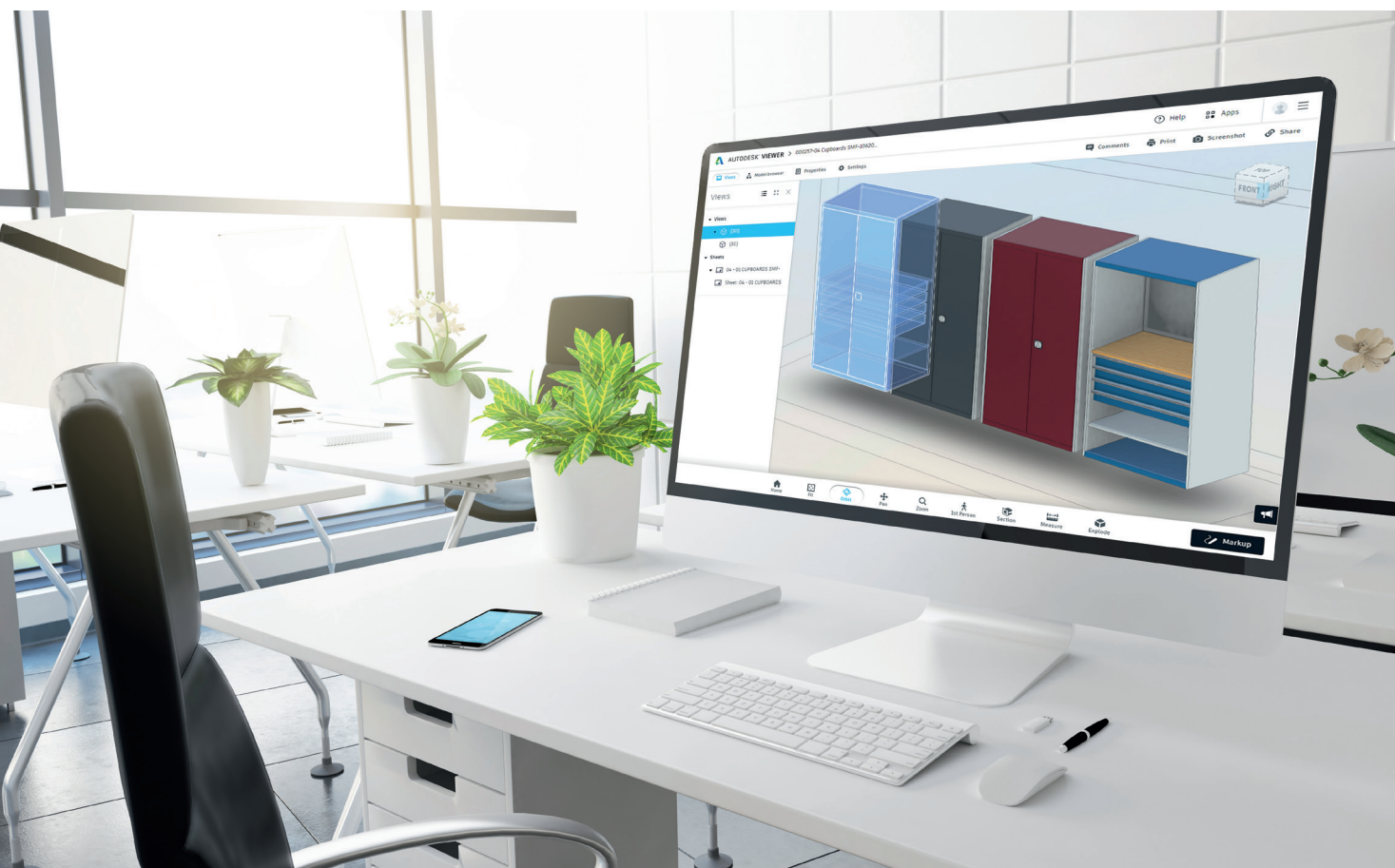
**Cubio Bench OH Kit 15-01**  
By Bott Ltd

**Cubio Mobile Cab 50-50 (Mpx)**  
By Bott Ltd

**Verso Economy Lectern With Backpanel**  
By Bott Ltd

**Verso Computer Cupboard**  
By Bott Ltd

Efficient collaboration



## Improve project workflows

In line with technological advances for streamlining processes in architecture & construction, we've enhanced our workplace storage offer through BIM compatibility.

In partnership with bimstore, selected items from our high-quality cubio and verso ranges are available as free, downloadable BIM (Building Information Modelling) objects. If you're an architect or construction manager working on a large-scale project, you can select from our approved BIM range and specify bott products in your design proposals.

At a time where efficient collaboration is more important than ever, this latest chapter in our custom, design & build offer, helps you and your stakeholders improve project delivery.

**Choose bott for efficient project delivery.**

# Dedicated fleet



Quality service

Handled with care





## Delivered with pride

To help maintain the best in customer service, we continually invest in our very own distribution and transport fleet.

We operate an intensive service, running outbound deliveries of workshop equipment throughout the UK & Europe and returning with raw materials to our manufacturing site.

With the help of new technologies, our efficiencies are continually improving; with on-board telematics systems and electronic processes, we can track everything from driver and vehicle performance, to route optimisation and fuel consumption.

Our dedicated drivers are proud to represent the bott brand and are committed to delivering a reliable, quality service; efficiently transporting products from our site to yours, with the utmost care and attention.

**Choose bott for reliable delivery.**

# Expert installations



Scheduled to suit you





## Peace of mind, assured

As an optional extra and to finish off the process, we can install your workplace storage equipment so that it's ready for use.

To keep disruption down to a minimum, our installations are scheduled to fit around you and your business, ensuring a swift and easy transfer into your new workspace.

Our highly trained engineers will meet the delivery, unwrap and assemble the equipment and efficiently install your system in accordance with site requirements. They will handle every part of the build - leaving you with a fully functional working environment to be proud of.

You can be confident that from consultation and design, through to delivery and completed installation, we'll provide a reliable, professional, high-quality service.

**Choose bott for peace of mind.**

# Custom solutions



Flexible manufacturing  
capability





## Tailor your workspace

Using our flexible range of accessories and components, we can tailor your equipment to perfectly match your needs and surroundings. From parts designed to fit around pillars and floor obstructions, to storage management and locking systems, your solution will be unique to you.

If you're looking to incorporate machinery and tools into your storage or need system integration with charging points for example, our team will advise on how our products can be adapted to suit your requirements. We are also open to creating bespoke products.

To strengthen your brand or to complement your workshop, office or garage, you can finish off your workplace storage equipment in a custom colour.

In addition to our five standard options, we have the manufacturing flexibility to supply your products in a special colour or combination of your choice. For environments demanding the highest levels of hygiene, such as hospitals, schools and food production facilities, antibacterial coatings can be arranged upon request.

For industrial settings where static electricity can cause a problem, particularly for sensitive components used in electronics assembly, ESD safe coatings are also an option.

**Choose bott and we'll help you create an individual workspace to be proud of.**

# Customer service



After-sales support

Dedicated team





## We will support you

Ready to create your optimal workspace?

Whether you're working on a brand-new building or simply transforming an existing area, we understand that poorly managed projects can often be troublesome, time-consuming and potentially costly.

We're confident that our project management service will provide peace of mind throughout the whole process, with our expert team here to support you every step of the way.

From design and production through to logistics and customer service, we're passionate about delivering high-quality, value solutions. Let's see what we can achieve for you and your business.

**Choose bott for first-class customer service.**

Contact us:

Tel: 01288 357788 or Email: [projects@bottltd.co.uk](mailto:projects@bottltd.co.uk)



# Case study



“bott is a fantastic company  
to work with...”



## Manufacturing Technology Centre

Our team designed, developed and installed a bespoke storage solution for the Manufacturing Technology Centre (MTC) research facility in Coventry, enabling tools, parts and components to be efficiently organised and easily retrieved when required.

Specialising in a range of manufacturing processes that are particularly relevant to the high-value manufacturing sector, the centre's work involves the use of a wide range of tools, parts and components, including sensors, clamps, hydraulic systems, measurement equipment and hand tools.

With employees using these items on a regular basis, the MTC required a storage system that offered efficient and

secure storage, effective organisation and quick retrieval, along with sufficient space for working.

In line with the MTC's requirements, we developed three bespoke horseshoe-shaped storage areas with designated workspaces, all with slightly different specifications. The areas were developed with maximum storage and optimum workspace in mind. The flexibility provided allows the system to be expanded or altered if necessary.

**"bott is a fantastic company to work with. Its products are aesthetically pleasing and there is a wide range of very flexible, cost-competitive items to choose from."**



# Case study



"An excellent job..."





## Multimatic Motorsports

As part of our long-term partnership with Multimatic Motorsports (Europe), we developed and installed solutions for an extensive workshop fit out at their brand new facilities at Arrow Park, in Brackley.

The purpose-built, state-of-the-art facility comprises speciality workshops for the team's engineers and mechanics; including main race bays, supplementary & sub-assembly bays, composites area and the electronics & data room, machine shop and stores area.

The company took advantage of our custom design & build service, including on-site consultation, 2D/3D design proposals and full installation for the 29,000+ sq. ft. site.

From the race bays through to the electrical department, the team were supplied with a professional, contemporary and fully functional workspace.

**"We were delighted to be able to work with bott again on the fit out of the new building. They did an excellent job for us at Greatworth Park and the work at Arrow Park for our new building is even better – a truly outstanding service of which all the team members are very proud."**

# Case study



“The service provided  
was first-class...”



## Costa Coffee

With exacting standards when it comes to delivering the perfect cup of coffee, it was only natural that Costa chose a company like bott to provide them with workshop storage equipment for their maintenance workshop at their roastery in Basildon.

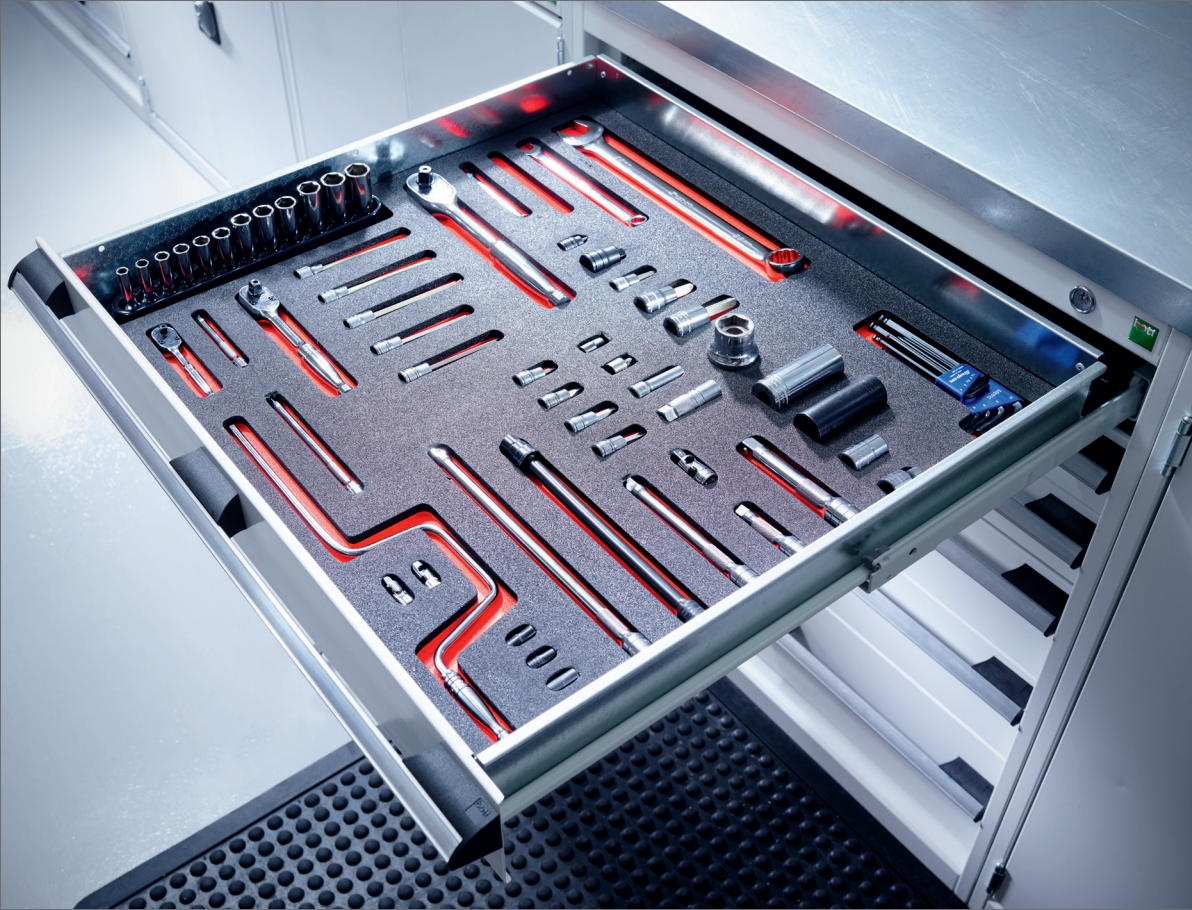
The design consisted of large and wall storage cupboards, drawer cabinets, maintenance trolleys and bott perfo back panels for easy access tool & component storage. Solid Beech worktops were recommended for the Pneumatic/Wet area, accommodating a sink at one end and diagnostic testing at the other. Lino worktops in the Mechanical/Metalwork

area provide the perfect working surface for heavier work such as grinding and drilling. Custom details such as a hose reel cabinet and letterbox bins were also added, and all the products were finished in a durable powder-coat in Costa's signature colours.

**"Our investment into the new roastery in Basildon demanded choosing equipment of the highest quality, enabling us to continue producing the best products and grow as a global business. We have full confidence in the quality and longevity of bott's products and the service provided was first-class."**



# Case study



"A truly professional workshop."



## Ricardo

In the Motorsport industry, an organised and efficient workshop is paramount, tools & parts need to be easily retrieved to ensure a smooth operation. Our modular system of heavy duty workbenches, drawer cabinets and tool cupboards, combine to create tailored workshops that meet the demands of this dynamic environment.

The Ricardo team required a professional working environment at their high performance manufacturing facility. The workspace needed to be clean and well organised to support the assembly of precision components.

**“We approached bott with an initial idea for what we wanted; the team at bott then created a 3D design proposal. The equipment was then manufactured and installed to support our requirement. Given the exacting nature of our work we need a very well organised and tidy workplace to ensure we successfully deliver to our clients. The bott equipment and design process has given us a truly professional workshop.”**



Scan here to explore more customer solutions  
from a variety of sectors across the UK.



For more information please contact your local dealer: